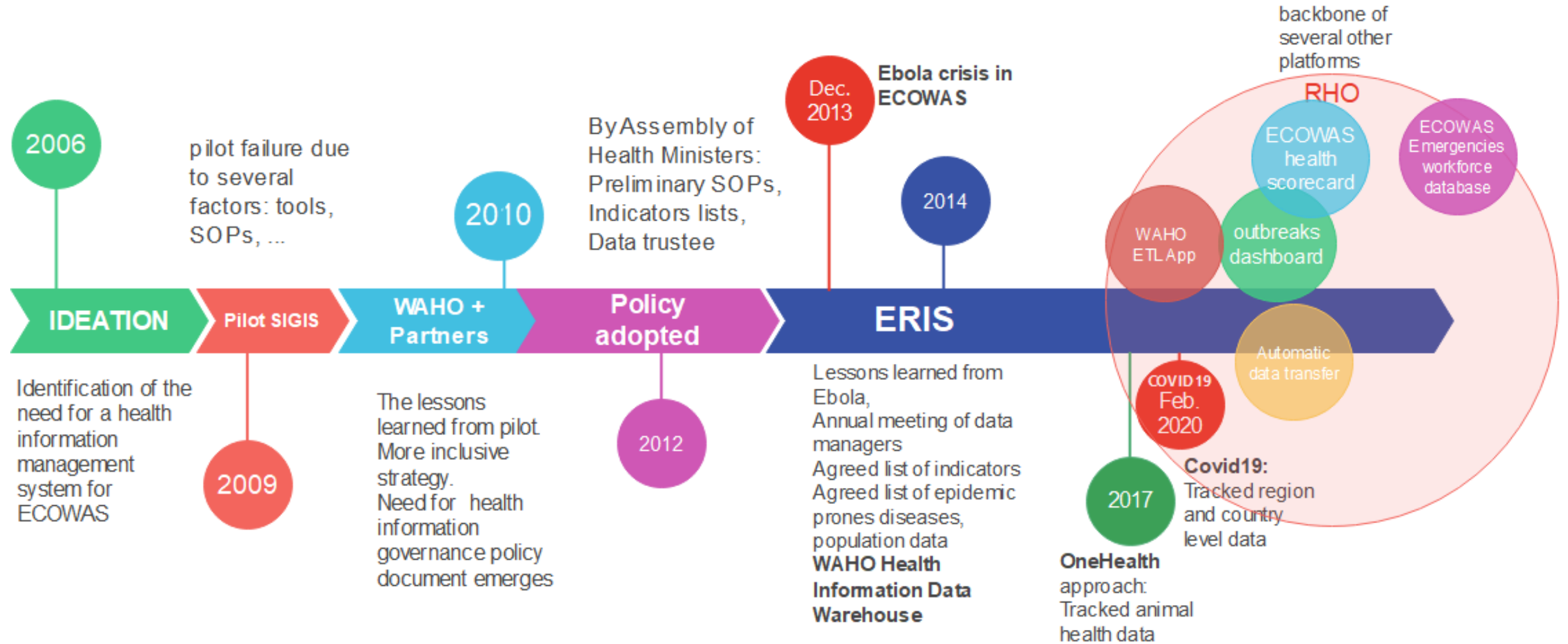


PLAN

- **Introduction**
- **Objective of the platform**
- **Process**
- **Data collection**
- **Reporting rates**
- **Data use**
- **Challenges**
- **Conclusion**

INTRODUCTION

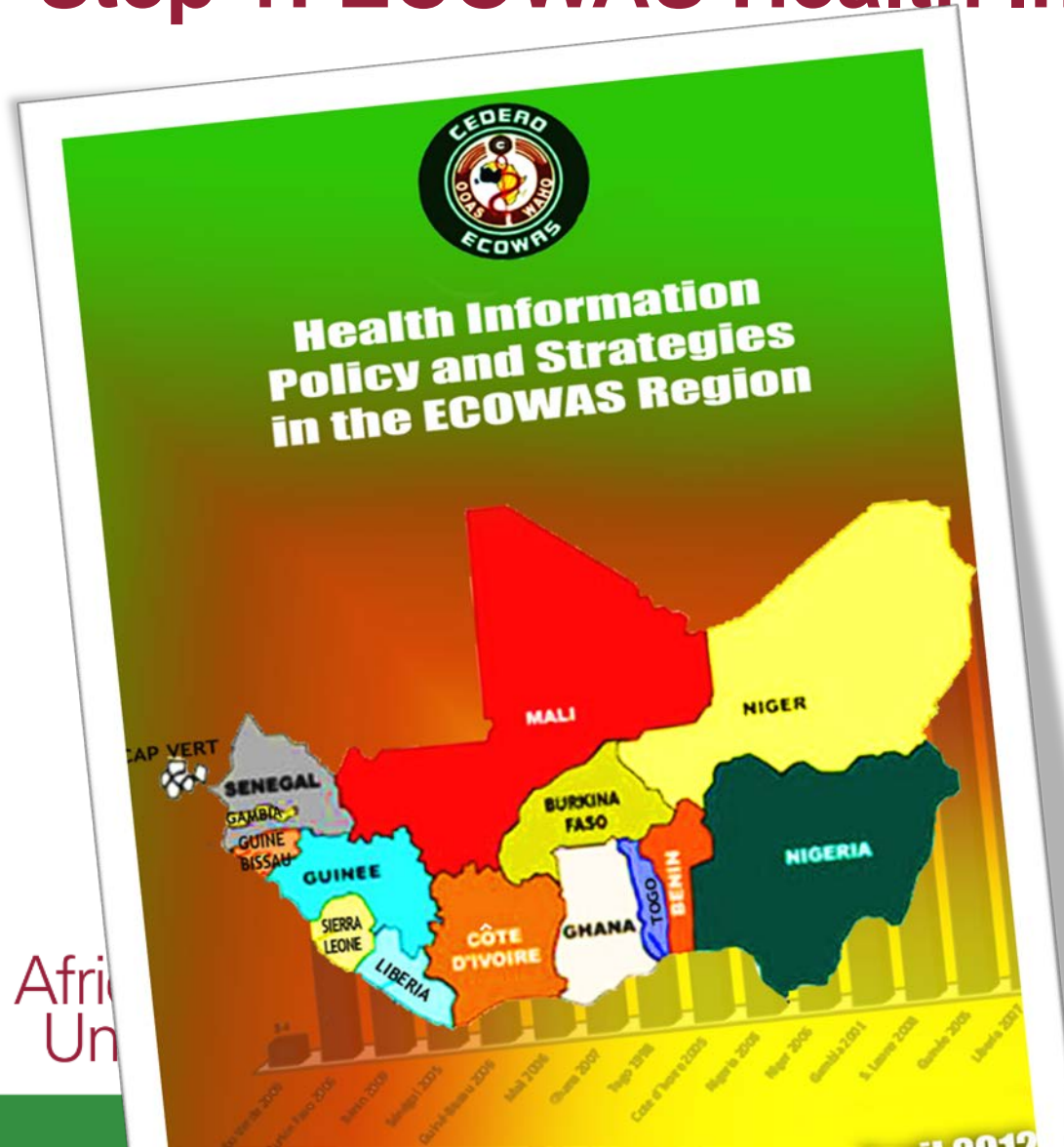


OBJECTIVES OF THE PLATFORM

Ensure sharing of information on Epidemic Prone Diseases and other important public health events throughout the ECOWAS region

Process for WAHO Data warehouse

Step 1: ECOWAS Health Information policy



- **Objectives**

- To serve as a framework for the collection and dissemination of health information in all ECOWAS countries

- **Adopted by the AHM in 2012**

- **Vision**

- Availability and Accessibility of quality health information for informed decision-making at all level among ECOWAS member states

- **Strategy**

- Establish a Regional Data Warehouse for health information, to which the countries data are submitted

Process for WAHO Data warehouse

Step 2: Design with countries and partners, ...



8TH ANNUAL MEETING OF NATIONAL OFFICIALS AND TECHNICAL AND FINANCIAL PARTNERS IN HEALTH INFORMATION SYSTEMS (HIS) AND INTEGRATED DISEASE SURVEILLANCE AND RESPONSE (IDSR), **2017**

9TH ANNUAL MEETING OF NATIONAL OFFICIALS AND TECHNICAL AND FINANCIAL PARTNERS IN HEALTH INFORMATION SYSTEMS (HIS) AND INTEGRATED DISEASE SURVEILLANCE AND RESPONSE (IDSR), **2018**

Process for WAHO Data warehouse

Step 3 :List of Priority Diseases, Conditions and Events

epidemic prone diseases (Human health)	Diseases to be eradicated / eliminated	Other diseases or events	animal health
Anthrax Cholera Dengue fever Bloody diarrhea (Shigella) Yellow fever Lassa fever Rift Valley Fever Highly pathogenic avian influenza (HPAI) Meningitis (MCS) MVE Measles Zika virus	AFP (Poliomyelitis) Neonatal tetanus	Malaria Rabies Maternal Mortality Neonatal Deaths	Anthrax, Highly pathogenic avian influenza, Brucellosis, Ebola and Rift Valley Fever. Rabies

Process for WAHO Data warehouse

Step 4: DHIS-2 setup for WAHO Data Warehouse

- Creating Data elements, Indicators and its relevant groups;
- Core indicators on diseases and health services delivery from all ECOWAS countries:
 - Weekly epidemic disease data
 - Health tracer indicator data and
 - ECOWAS programs data

Process for WAHO Data warehouse

Step 5: Creating ECOWAS member states and GIS Coordinates

- **Getting consensus** on organization unit level
Country, Province, District
or Country, District or
Country, Region,
Province, District
- Exporting **Organization units** from ECOWAS Member States into the platform

Importing Organization unit from ECOWAS countries

Ghana	Cape Verde	Nigeria	Burkina Faso	Guine	...
Country	Country	Country	Country	Country	Country
Region	Island	State	Province	Region	Intermediate
District	Delegacie	LGA	District	District	Operational

Process for WAHO Data warehouse

Step 6: Inception in the ECOWAS member states

- Visited all WAHO member states
- Created WAHO platform users accounts
- Trained ISDR personnel on data entry and analysis

Step 7: Linking data from ECOWAS Data Warehouse to Web portal

- Still ongoing

Process for WAHO Data warehouse

Step 8: Automatic Data transfer - Ongoing

- Establish facility register – for ECOWAS region
- Mapping numerator to respective data elements in ECOWAS member state DHIS2 application
- IDSR more or less done
- OTHER Indicators; already in country DHIS2, easier to include
- Data by district → census by district

Process for WAHO Data warehouse

Step: Continuous improvement

WAHO Data Governance and Protection Policy



Goal:

- To create an effective and efficient **Regional Data Warehouse**
- To make health information in the region
 - Available
 - Of quality
 - Easily accessible
 - Used for decision making

Method:

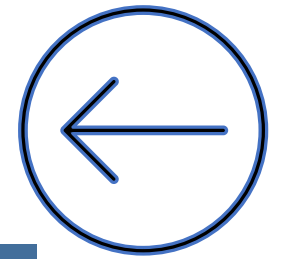
- To ensure that the data available at WAHO level is sure and secure

Adopted:

- 21ST ordinary session of the ECOWAS Assembly of Health Ministers (August 2020)

Process for WAHO Data warehouse

Link : <https://data.wahooas.org/>



ECOWAS-CEDEAO
Regional data warehouse

dhis2

Sign in

Username

Password

Login using two factor authentication

Sign in

Welcome to the ECOWAS Data Warehouse

Powered by DHIS 2. Pour plus d'informations sur FOGAS, merci de visiter la page www.wahooas.org

[Change language]

Process for WAHO Data warehouse

Collect, manage, visualize & analyze your data — all in one place

Dashboard

Epidemic situation by country this year

	Cholera cases	Cholera deaths	Ebola cases	Ebola confirmed cases	Ebola deaths	Lassa fever cases	Lassa fever deaths	Meningitis cases	Meningitis deaths	Meningitis cases	Meningitis deaths	Yellow fever cases	Yellow fever deaths	Dengue cases
Benin	0	0	0	0	0	0	0	5	0	11	0	5	0	0
Guinea-Bissau	0	0	0	0	0	0	0	1	0	2	0	0	0	0
Liberia	0	0	0	0	0	0	0	0	0	0	0	0	0	0
Cote D'Ivoire	4	0	0	0	0	0	0	243	0	6	0	136	0	0
Cabo Verde	0	0	0	0	0	0	0	0	0	1	0	1	0	0
Senegal	0	0	0	0	0	0	0	187	0	62	0	88	0	0
Gambia	0	0	0	0	0	0	0	0	0	0	0	0	0	0
Sierra Leone	0	0	0	0	0	0	0	221	1	471	13	166	2	3
Mali	0	0	0	0	0	0	0	202	1	86	0	13	1	0
Niger	0	0	0	0	0	0	0	176	0	0	0	0	0	0

Meningitis Suspect case by country, this year

1) WAHO region: Meningitis incidence rate previous year

Messages

Données surveillance Semaine 34 (3)

Periods

Weekly

Available

Week 52 - 2021-12-27 - 2022-01-02

Week 51 - 2021-12-20 - 2021-12-26

Week 50 - 2021-12-13 - 2021-12-19

Week 49 - 2021-12-06 - 2021-12-12

Week 48 - 2021-11-29 - 2021-12-05

Week 47 - 2021-11-22 - 2021-11-28

Days

Today

Yesterday

Last 3 days

Last 7 days

Last 14 days

Bi-months

This bi-month

Last bi-month

Last 6 bi-months

Bi-months this year

Financial years

This financial year

Last financial year

Last 5 financial years

Weeks

This week

Last week

Last 4 weeks

Last 12 weeks

Last 52 weeks

Weeks this year

Quarters

This quarter

Last quarter

Last 4 quarters

Quarters this year

Months

This month

Last month

Last 3 months

Last 6 months

Last 12 months

Months this year

Six-months

This six-month

Last six-month

Last 2 six-months

Years

This year

Last year

Last 5 years

Country administrative level

Analytics Module (Table, Chart, Maps)

Periodicity



Data Collection

Epidemic Prone Disease (Weekly)

Epidemic Diseases			
	Suspect Cas	Confirmed Case	Death
Anthrax	<input type="text"/>	<input type="text"/>	<input type="text"/>
AFP/Polio	<input type="text"/>	<input type="text"/>	<input type="text"/>
Bloody diarrhoea/Shigellose	<input type="text"/>	<input type="text"/>	<input type="text"/>
Cholera	<input type="text"/>	<input type="text"/>	<input type="text"/>
Dengue fever	<input type="text"/>	<input type="text"/>	<input type="text"/>
Ebola	<input type="text"/>	<input type="text"/>	<input type="text"/>
Guinea worm	<input type="text"/>	<input type="text"/>	<input type="text"/>
Lassa fever	<input type="text"/>	<input type="text"/>	<input type="text"/>
Measles	<input type="text"/>	<input type="text"/>	<input type="text"/>
Meningitis	<input type="text"/>	<input type="text"/>	<input type="text"/>
Neonatal tetanus	<input type="text"/>	<input type="text"/>	<input type="text"/>
Rabies	<input type="text"/>	<input type="text"/>	<input type="text"/>
Yellow fever	<input type="text"/>	<input type="text"/>	<input type="text"/>
Highly Pathogenic Avian Influenza	<input type="text"/>	<input type="text"/>	<input type="text"/>
Fever Rift Valley	<input type="text"/>	<input type="text"/>	<input type="text"/>
Zika virus	<input type="text"/>	<input type="text"/>	<input type="text"/>

Zoonoses (Monthly)

Maladies Epidemiques			
	Suspect Cases	Confirmed cases	Deaths
Anthrax	<input type="text"/>	<input type="text"/>	<input type="text"/>
Rabies	<input type="text"/>	<input type="text"/>	<input type="text"/>
Highly Pathogenic Avian Influenza	<input type="text"/>	<input type="text"/>	<input type="text"/>
Brucellosis	<input type="text"/>	<input type="text"/>	<input type="text"/>
Ebola	<input type="text"/>	<input type="text"/>	<input type="text"/>
Fever Rift Valley	<input type="text"/>	<input type="text"/>	<input type="text"/>
Tuberculosis	<input type="text"/>	<input type="text"/>	<input type="text"/>

A

Data Collection

Outbreaks (Daily)

New event

Report Date* 2021-03-01

Disease Outbreaks

Data element	Value
Outbreak_Disease *	Select or search from the list
Outbreak_Number Confirmed Cases *	
Outbreak_Number Deaths *	
Outbreak_Number Recovered Cases *	
Outbreak_Number Samples Tested *	
Outbreak_Informations supplémentaires *	

Other Diseases (Weekly)

Other Diseases

	Cas Suspects	Cas Confirmés	Décès
Malaria			
Maternal deaths			
Neonatal deaths			

Reporting rates (Human Health)

Human health data reporting rate						
Countries	2018	2019	2020	2021	3 year trend	Mode de collect
Benin	100	100	100	1.9		importation
Burkina Faso	100	100	100	13.5		importation
Gambia	100	100	100	13.5		importation
Mali	100	100	100	13.5		importation
Niger	100	100	100	5.8		importation
Sierra Leone	100	100	100	11.5		automatic sync
Togo	99.6	100	100	11.8		importation
Senegal	53.7	100	100	13.5		importation
Nigeria	98.6	99.3	100			importation
Guinea	99.9	100	98.1			automatic sync
Cote D'Ivoire	100	100	100	1		importation
Guine-Bissau	99.8	100	97.2	11.5		manual entry
Ghana	100	100	100	11.5		importation
Cabo Verde	99.2	100	97.1			manual entry
Liberia	97.9	100	3.8			manual entry

- Reporting rates over 90 %
- Data reporting method :
 - Excel IDSR import (11 countries)
 - Manual Entry (2 countries)
 - Automatic synchronization (2 country)

Reporting rates (Animal Health)

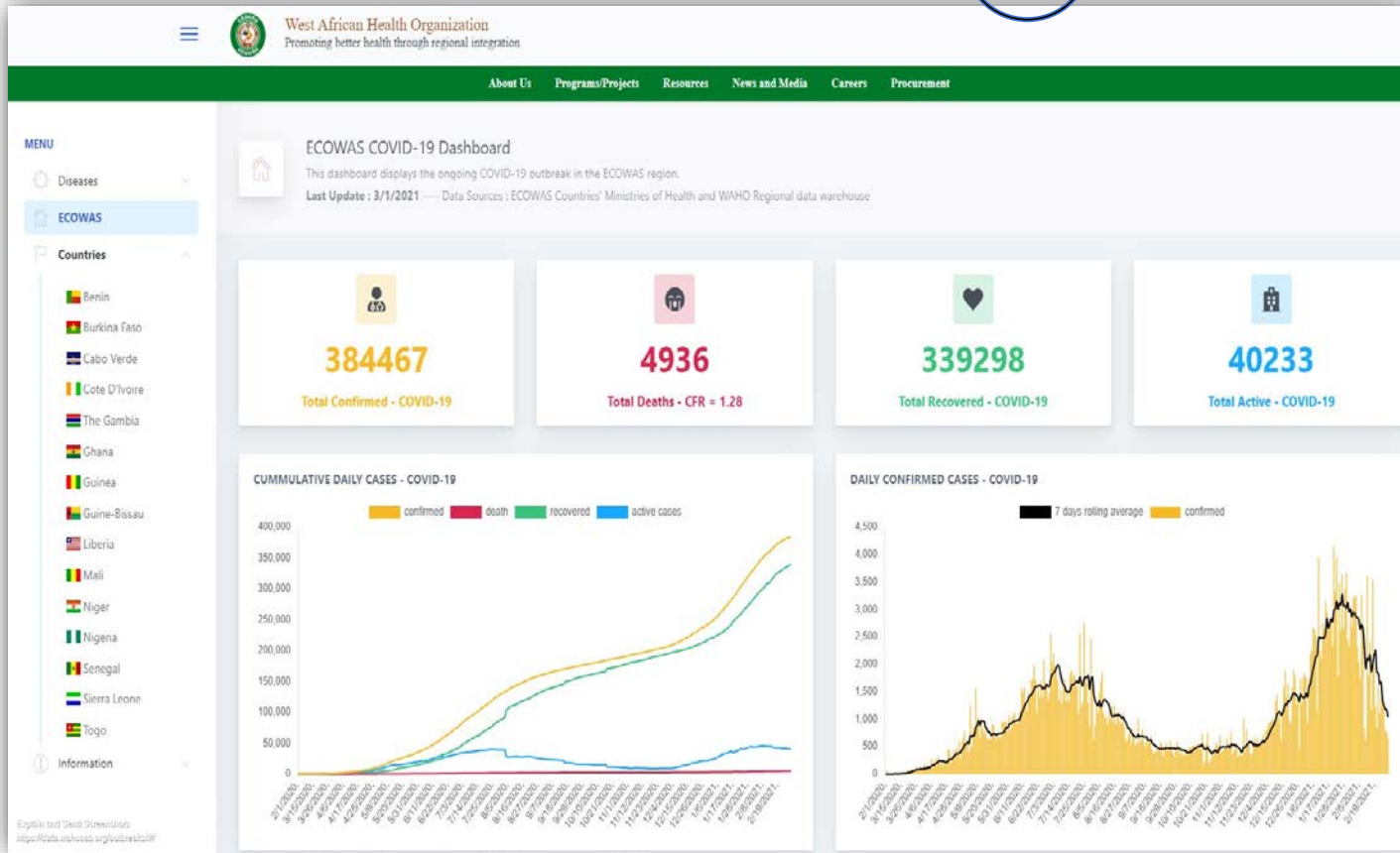
Animal health data reporting rate						
Countries	2018	2019	2020	2021	3 year trend	Mode de collect
Mali	98.5	98.5	91.7			manual entry
Guinea	100	97.9	76	2.1		manual entry
Niger	100	100	65.6			manual entry
Guine-Bissau	31.7	29.7	38.2			manual entry
Senegal	100	100	8.3			manual entry
Togo	100		6.9			manual entry
Cote D'Ivoire	95	74.6				manual entry
Burkina Faso	88.5	40.4				manual entry
Gambia	100	35.7				manual entry
Benin	100	4.9				manual entry
Ghana	90.8	17				manual entry
Liberia	0.56	0.56				manual entry
Nigeria	21.8					manual entry
Cabo Verde						manual entry
Sierra Leone						manual entry

- Reporting rates 35%
- Data reporting method : Manual Entry

Data Use

Outbreak Dashboard (covid19)

<http://data.wahooas.org/outbreaks>



Weekly Bulletin

BULLETIN D'INFORMATIONS
EPIDEMIOLOGIQUE

EPIDEMIOLOGICAL
NEWSLETTER

Semaine / Week 33 (10 - 16 Août / August 2020) **25 Août 2020 / August 25, 2020**

Contenu	Contents
<ul style="list-style-type: none"> - Aperçu Global de la situation épidémiologique. - Synthèse des événements sanitaires en 2020. - Situation épidémiologique de la Fièvre Jaune. - Epidémie du Covid-19 : mise à jour - Epidémie à Virus Ebola en RDC : mise à jour. 	<ul style="list-style-type: none"> - Overview of epidemiological situation. - Summary of health events in 2020. - Epidemiological situation of Yellow Fever. - Covid-19 outbreak: update. - Ebola Virus epidemic in the DRC: Update.

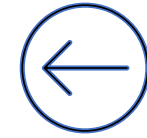
Aperçu des menaces sanitaires dans l'espace CEDEAO
Overview of health threats in the ECOWAS region

Nouveaux Evénements / News Events	Evénements en cours / Ongoing Events
	Covid-19: all Ecowas Members states
	Fièvre Jaune / Yellow Fever: Nigeria, Mali, Togo, Sénégal.
Fièvre Hémorragic de Crimée-Congo / Crimean-Congo Hemorrhagic fever : Sénégal	Hémorrhagic fever : Mali
	Fièvre de Lassa / Lassa Fever : Nigeria, Liberia, Bénin, Guinée
	Poliomyélite / Poliomyelitis : Bénin, Burkina Faso, Côte-d'Ivoire, Togo, Ghana, Nigeria, Guinée.
	Rougeole / Measles : Côte d'Ivoire, Guinée, Ghana, Libéria, Mali, Niger et Nigéria.

Data Use

Outbreak Dashboard (covid19)

<http://data.wahooas.org/outbreaks>



Data Use



ECOWAS Health Profile



Health Situation

Challenges

Strengths

- Adopted by AHM
- Accepted and used by countries
- Based on open-source product with a big community
- Based on the same solution used at country level
- Unique in the ECOWAS region

Challenges

- Organization Units update with Geographical information about countries
- Data collection delay during outbreaks;
- High turnover of national's data managers
- Setup Automatic data synchronization
- The quality of data depend on countries system

Opportunities

- Cooperation with WHO in Afro Surveillance Platform
- Support from World Bank Regional project (REDISSE)
- RAHC cooperate with WAHO
- Cooperation with AU CDC

Area improvements

- Improve Animal health data reporting rates
- Train data managers on data analysis
- Improve/promote the use of data for decision making
- Continue Data Quality Control
- Setup Automatic data synchronization
- Integrate environment data

Conclusion

- **An inclusive approach is essential (countries, TFPs, etc.) given the failure of the first attempts;**
- **An adoption by the assembly of ministers is required;**
- **a buy-in from the countries (managers, technicians, ...)**
- **The use of a homogeneous solution with the countries allows the capitalization of training and other capacity building initiatives;**
- **Building on other solutions on the regional platform strengthens it.**

